



The following technical datasheet is provided by Osmo.

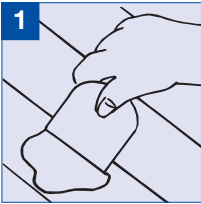
For further information please either give us a call or visit the manufacturer's website.

Wood Floors and Accessories cannot be held liable for the information contained within this document.
All information is correct at the time of download from the manufacturer.

Spilsby Road • Harold Hill • Romford • RM3 8SB • **T** 020 8501 6730 • **E** info@wfa.uk.net • **W** www.wfa.uk.net

Registered in England under Company No: 03746590 VAT No: 765 9995 45

BEFORE PROCEEDING PLEASE NOTE:



FOR SPOT PATCHING

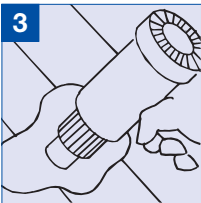
1. APPLY:

If staining, use OSMO WOODFILLER Natural/Clear. Otherwise match the colour to the wood. Using a plastic or high-quality stainless steel putty knife, apply OSMO WOODFILLER to the floor directly out of the tub prior to the last sanding. (NOTE: If filler turns black, the putty knife is not high-content stainless steel; however, the black will sand off.)



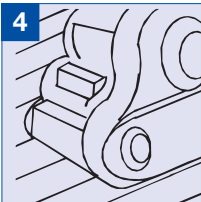
2. FILL:

If hole is greater than 6mm, fill by layering OSMO WOODFILLER in 6mm increments.



3. DRY:

Let OSMO WOODFILLER dry thoroughly. Use a heat gun or similar to speed drying time if desirable. (OSMO WOODFILLER is properly dry if it sands to the consistency of talcum powder.)

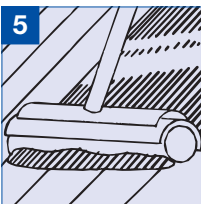


4. SAND:

Sand and remove all dust and debris.

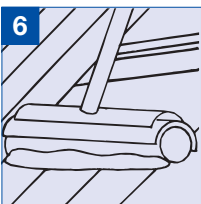
5. STAIN:

Apply stain to the floor (if staining). Do not rub the stain in with an aggressive action. Doing so will remove OSMO WOODFILLER.

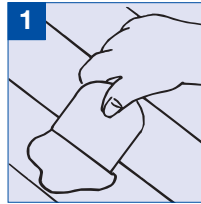


6. FINISH COAT:

Apply Osmo or any final finish coat.



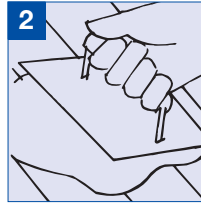
• OSMO WOODFILLER will dry lighter and return to its original colour once the final finish is applied



FOR TROWEL FILLING

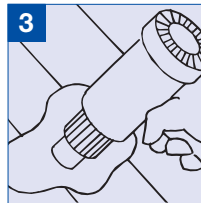
1. MIX:

If staining, use OSMO WOODFILLER Natural/Clear. Otherwise match the colour to the wood. Mix OSMO WOODFILLER in the tub with warm water (a mixer attached to a heavy duty drill is ideal). Slowly pour the water in as you mix – usually about 15% water by weight. Mix until OSMO WOODFILLER has the consistency of toothpaste.



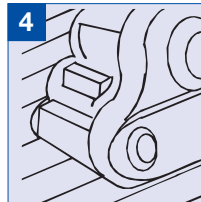
2. APPLY:

Apply OSMO WOODFILLER just before the final sand using a plastic trowel or rubber coat across the grain over the entire floor. Make sure the filler is forced into deep voids. Do not apply OSMO WOODFILLER too heavily – a small amount goes a long way. Remove all excess OSMO WOODFILLER. (Return excess to the OSMO WOODFILLER container – no waste.)



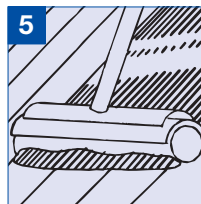
3. DRY:

Let OSMO WOODFILLER dry thoroughly. Use a heat gun or similar to speed drying time if desirable. OSMO WOODFILLER is properly dry if it sands to the consistency of talcum powder.)



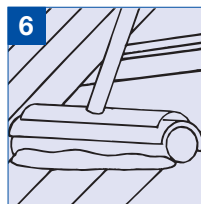
4. SAND:

Final sand and remove all dust and debris. (If grain filling do not use a grit coarser than 120.)



5. STAIN:

Apply stain to the floor (if staining). Do not rub the stain in with an aggressive action; doing so will remove OSMO WOODFILLER.



6. FINISH COAT:

Apply Osmo or any final finish coat.

• OSMO WOODFILLER can be mixed with any tint or stain to achieve a custom colour

ADVANTAGES OF USING OSMO WOODFILLER INCLUDE:

- Fast drying, approximately 30 minutes
- Available in a wide range of colours
- Non-flammable
- Multi-purpose/ edgefiller, woodputty, crackfiller, sanding sealer all in one
- Non-toxic
- Non-acrylic/ latex/ solvent
- Tools easy to clean in water
- Stainable, before or after application
- Heat proof and freeze proof
- Won't shrink, sink, crack or fall out
- Indefinite life storage – no waste
- Usable to last drop



Excellent for commercial and domestic applications.



Material Safety Data Sheets
 according to 1907/2006/EC, Article 31

Printing date 24.05.2018

Version number 13

Revision: 14.05.2018

SECTION 1: Identification of the substance/mixture and of the company/undertaking

1.1 Product identifier

Trade name: Osmo Wood Filler

Article number: 7300 White, 7301 Beech, 7302 Pine, 7303 Mahogany, 7304 Oak

1.2 Relevant identified uses of the substance or mixture and uses advised against

advised against No further relevant information available.

Application of the substance / the mixture

Knifing filler/ Surfacer

1.3 Details of the supplier of the safety data sheet

Manufacturer/Supplier: Osmo Holz und Color GmbH & Co. KG
 Affhüppen Esch 12
 D-48231 Warendorf

Further information obtainable from:

Product safety department
 Phone: +49 (0) 251 / 692 - 188
 Fax: +49 (0) 251 / 692 - 462
 e-mail: helmut.starp@osmo.de

1.4 Emergency telephone number:

emergency phone no. Berlin (24h): +49 (0) 30 / 30686 790 advisory service in German and English

* **SECTION 2: Hazards identification**

2.1 Classification of the substance or mixture**Classification according to**

Regulation (EC) No 1272/2008 The product is not classified, according to the CLP regulation.

2.2 Label elements**Labelling according to Regulation****(EC) No 1272/2008**

Void

Hazard pictograms

Void

Signal word

Void

Hazard statements

Void

Precautionary statements

Although this product is not subject to identification regulations, we recommend that the safety suggestions are observed.
 Keep out of reach of children.

Additional information:

Contains 1,2-benzisothiazol-3(2H)-one. May produce an allergic reaction.

2.3 Other hazards**Results of PBT and vPvB assessment**

PBT: Not applicable.

vPvB: Not applicable.

(Contd. on page 2)

Material Safety Data Sheets
 according to 1907/2006/EC, Article 31

Printing date 24.05.2018

Version number 13

Revision: 14.05.2018

Trade name: Osmo Wood Filler

(Contd. of page 1)

SECTION 3: Composition/information on ingredients**3.2 Mixtures****Description:** Mixture of substances listed below with nonhazardous additions.**Dangerous components:** Void**Additional information:** For the wording of the listed hazard phrases refer to section 16.**SECTION 4: First aid measures****4.1 Description of first aid measures****General information:** No special measures required.**After inhalation:** Supply fresh air; consult doctor in case of complaints.**After skin contact:** Generally the product does not irritate the skin.**After eye contact:** Rinse opened eye for several minutes under running water.**After swallowing:** If symptoms persist consult doctor.**4.2 Most important symptoms and****effects, both acute and delayed** No further relevant information available.**4.3 Indication of any immediate****medical attention and special****treatment needed**

No further relevant information available.

SECTION 5: Firefighting measures**5.1 Extinguishing media****Suitable extinguishing agents:** CO₂, powder or water spray. Fight larger fires with water spray or alcohol resistant foam.**5.2 Special hazards arising from the substance or mixture**

No further relevant information available.

5.3 Advice for firefighters**Protective equipment:** No special measures required.**SECTION 6: Accidental release measures****6.1 Personal precautions, protective equipment and emergency procedures**

Not required.

6.2 Environmental precautions:

Dilute with plenty of water.

Do not allow to enter sewers/ surface or ground water.

6.3 Methods and material for containment and cleaning up:

Absorb with liquid-binding material (sand, diatomite, acid binders, universal binders).

(Contd. on page 3)

Trade name: Osmo Wood Filler

(Contd. of page 2)

6.4 Reference to other sections No dangerous substances are released.

SECTION 7: Handling and storage

7.1 Precautions for safe handling No special measures required.

Information about fire - and explosion protection: No special measures required.

7.2 Conditions for safe storage, including any incompatibilities
Storage:

Requirements to be met by storerooms and receptacles: No special requirements.

Information about storage in one common storage facility: Not required.

Further information about storage conditions: Protect from frost.

7.3 Specific end use(s) No further relevant information available.

SECTION 8: Exposure controls/personal protection

Additional information about design of technical facilities: No further data; see item 7.

8.1 Control parameters

Ingredients with limit values that require monitoring at the workplace:

The product does not contain any relevant quantities of materials with critical values that have to be monitored at the workplace.

Additional information: The lists valid during the making were used as basis.

8.2 Exposure controls

Personal protective equipment:

General protective and hygienic measures:

The usual precautionary measures are to be adhered to when handling chemicals.

Respiratory protection: Not required.

Protection of hands:

The glove material has to be impermeable and resistant to the product/ the substance/ the preparation.

Selection of the glove material on consideration of the penetration times, rates of diffusion and the degradation

Material of gloves Nitrile rubber, NBR

Penetration time of glove material The exact break through time has to be found out by the manufacturer of the protective gloves and has to be observed.

For the permanent contact gloves made of the following materials are suitable:

Nitrile rubber, NBR

(Contd. on page 4)

Material Safety Data Sheets
 according to 1907/2006/EC, Article 31

Printing date 24.05.2018

Version number 13

Revision: 14.05.2018

Trade name: Osmo Wood Filler

(Contd. of page 3)

Recommended thickness of the material: ≥ 0.4 mm

For the mixture of chemicals mentioned below the penetration time has to be at least 480 minutes (Permeation according to EN 374 Part 3: Level 6).

*As protection from splashes
gloves made of the following
materials are suitable:*

Nitrile rubber, NBR

Eye protection:

Goggles recommended during refilling

Body protection:

Protective work clothing

SECTION 9: Physical and chemical properties**9.1 Information on basic physical and chemical properties****General Information****Appearance:**

Form:	Pasty
Colour:	According to product specification
Odour:	Mild

Change in condition**Melting point/freezing point:** Undetermined.**Initial boiling point and boiling range:** Undetermined.**Flash point:** Not applicable.**Auto-ignition temperature:** Product is not selfigniting.**Explosive properties:** Product does not present an explosion hazard.**Density at 20 °C:** 1.92 g/cm³ (DIN 51757)**Solubility in / Miscibility with
water:**

Fully miscible.

Viscosity:**Dynamic:** Not determined.**Kinematic:** Not determined.**9.2 Other information**

No further relevant information available.

SECTION 10: Stability and reactivity**10.1 Reactivity** No further relevant information available.**10.2 Chemical stability****Thermal decomposition /
conditions to be avoided:**

No decomposition if used according to specifications.

**10.3 Possibility of hazardous
reactions**

No dangerous reactions known.

10.4 Conditions to avoid

No further relevant information available.

(Contd. on page 5)

Material Safety Data Sheets
 according to 1907/2006/EC, Article 31

Printing date 24.05.2018

Version number 13

Revision: 14.05.2018

Trade name: Osmo Wood Filler

(Contd. of page 4)

10.5 Incompatible materials: No further relevant information available.**10.6 Hazardous decomposition products:** No dangerous decomposition products known.**SECTION 11: Toxicological information****11.1 Information on toxicological effects****Acute toxicity** Based on available data, the classification criteria are not met.**Primary irritant effect:****Skin corrosion/irritation** Based on available data, the classification criteria are not met.**Serious eye damage/irritation** Based on available data, the classification criteria are not met.**Respiratory or skin sensitisation** Based on available data, the classification criteria are not met.**CMR effects (carcinogenicity, mutagenicity and toxicity for reproduction)****Germ cell mutagenicity** Based on available data, the classification criteria are not met.**Carcinogenicity** Based on available data, the classification criteria are not met.**Reproductive toxicity** Based on available data, the classification criteria are not met.**STOT-single exposure** Based on available data, the classification criteria are not met.**STOT-repeated exposure** Based on available data, the classification criteria are not met.**Aspiration hazard** Based on available data, the classification criteria are not met.**SECTION 12: Ecological information****12.1 Toxicity****Aquatic toxicity:** No further relevant information available.**12.2 Persistence and degradability** No further relevant information available.**12.3 Bioaccumulative potential** No further relevant information available.**12.4 Mobility in soil** No further relevant information available.**Additional ecological information:****General notes:** Water hazard class 1 (German Regulation) (Self-assessment): slightly hazardous for water**12.5 Results of PBT and vPvB assessment****PBT:** Not applicable.**vPvB:** Not applicable.**12.6 Other adverse effects** No further relevant information available.**SECTION 13: Disposal considerations****13.1 Waste treatment methods****Recommendation** Must not be disposed together with household garbage. Do not allow product to reach sewage system.**European waste catalogue**

08 01 12 | waste paint and varnish other than those mentioned in 08 01 11

(Contd. on page 6)

Trade name: Osmo Wood Filler

(Contd. of page 5)

15 01 10	packaging containing residues of or contaminated by dangerous substances
----------	--

Uncleaned packaging:**Recommendation:** Disposal must be made according to official regulations.**Recommended cleansing agents:** Water, if necessary together with cleansing agents.

SECTION 14: Transport information

14.1 UN-Number**ADR, ADN, IMDG, IATA** Void**14.2 UN proper shipping name****ADR, ADN, IMDG, IATA** Void**14.3 Transport hazard class(es)****ADR, ADN, IMDG, IATA****Class** Void**14.4 Packing group****ADR, IMDG, IATA** Void**14.5 Environmental hazards:****Marine pollutant:** No**14.6 Special precautions for user**

Not applicable.

14.7 Transport in bulk according to Annex II of Marpol and the IBC Code

Not applicable.

Transport/Additional information:

Not dangerous according to the above specifications.

UN "Model Regulation":

Void

SECTION 15: Regulatory information

15.1 Safety, health and environmental regulations/legislation specific for the substance or mixture**National regulations:****GISBAU-Code** GISCODE: W1**15.2 Chemical safety assessment:** A Chemical Safety Assessment has not been carried out.

SECTION 16: Other information

This information is based on our present knowledge. However, this shall not constitute a guarantee for any specific product features and shall not establish a legally valid contractual relationship.

Department issuing SDS: product safety department**Contact:** Hr. Dr. Starp

(Contd. on page 7)

Material Safety Data Sheets
according to 1907/2006/EC, Article 31

Printing date 24.05.2018

Version number 13

Revision: 14.05.2018

Trade name: Osmo Wood Filler

(Contd. of page 6)

Abbreviations and acronyms:

ADR: Accord européen sur le transport des marchandises dangereuses par Route (European Agreement concerning the International Carriage of Dangerous Goods by Road)
IMDG: International Maritime Code for Dangerous Goods
IATA: International Air Transport Association
GHS: Globally Harmonised System of Classification and Labelling of Chemicals
EINECS: European Inventory of Existing Commercial Chemical Substances
ELINCS: European List of Notified Chemical Substances
CAS: Chemical Abstracts Service (division of the American Chemical Society)
PBT: Persistent, Bioaccumulative and Toxic
vPvB: very Persistent and very Bioaccumulative

*** Data compared to the previous version altered.**